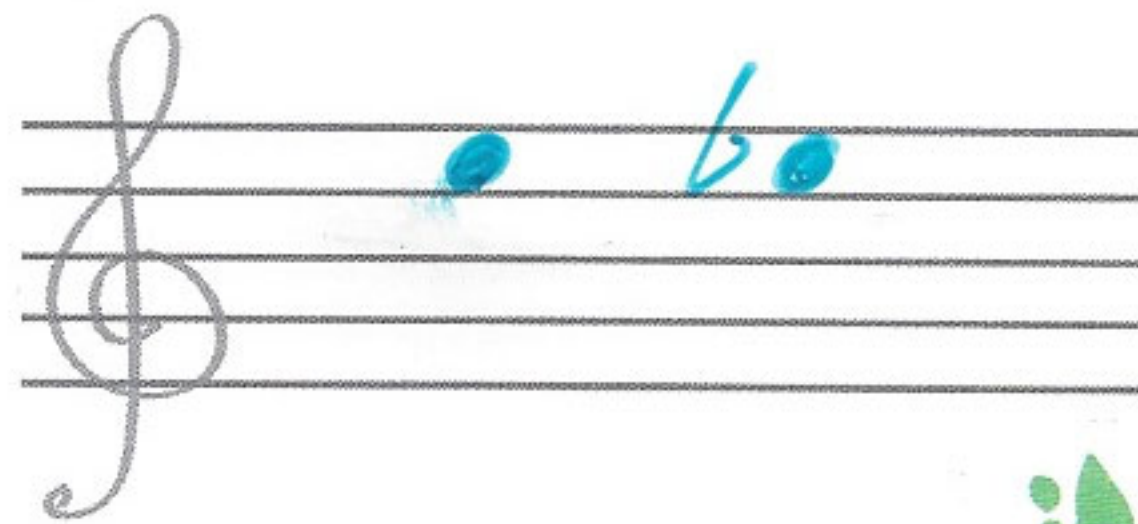
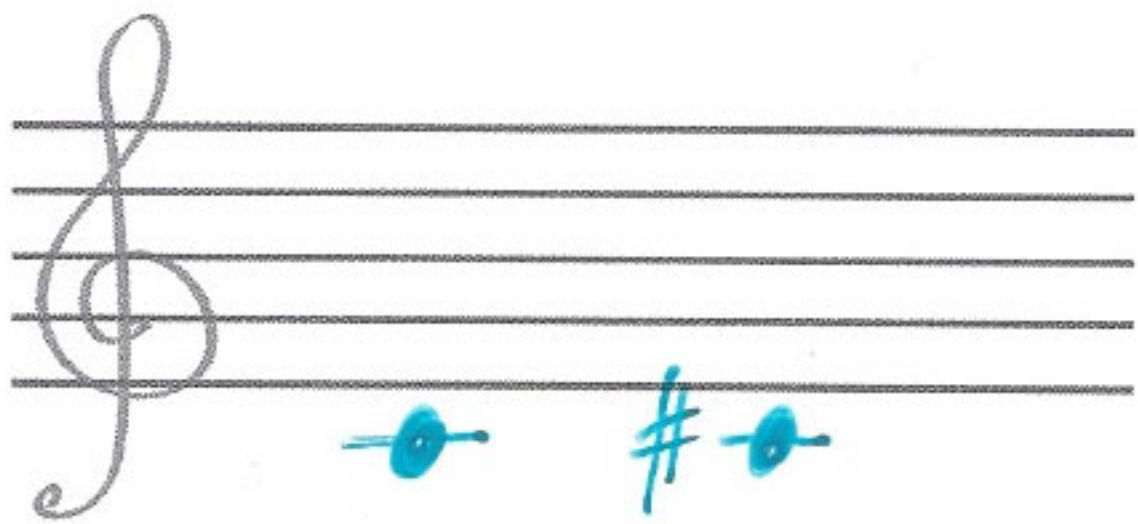
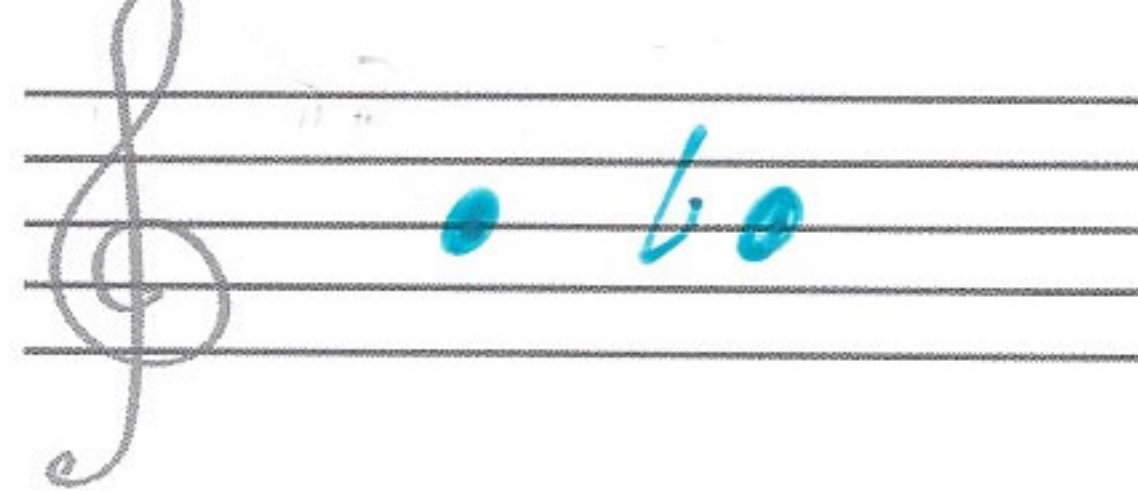
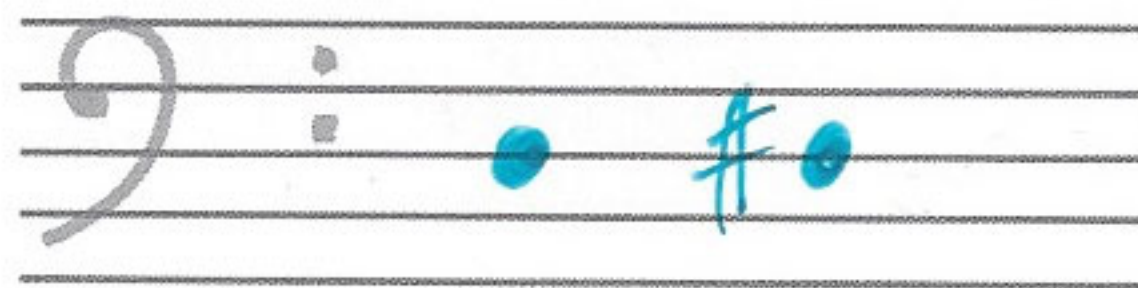
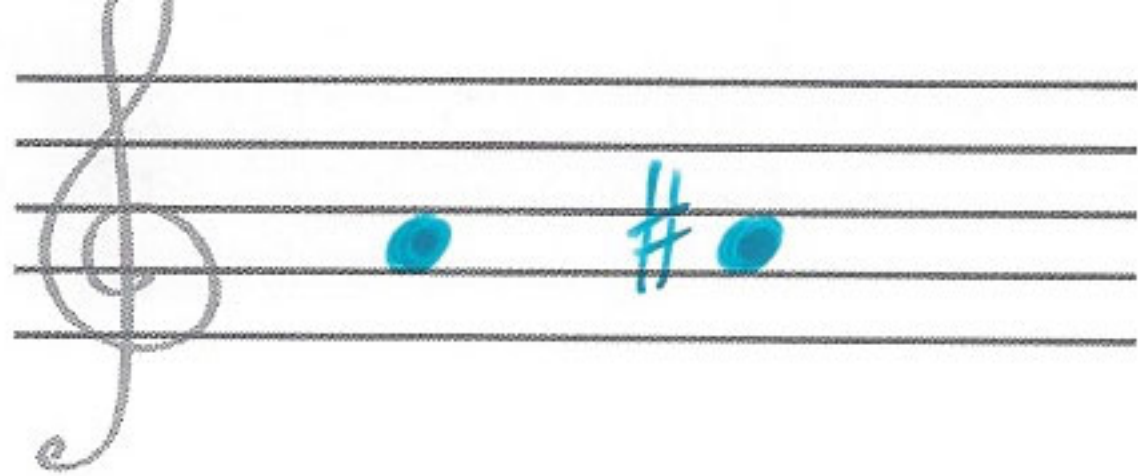
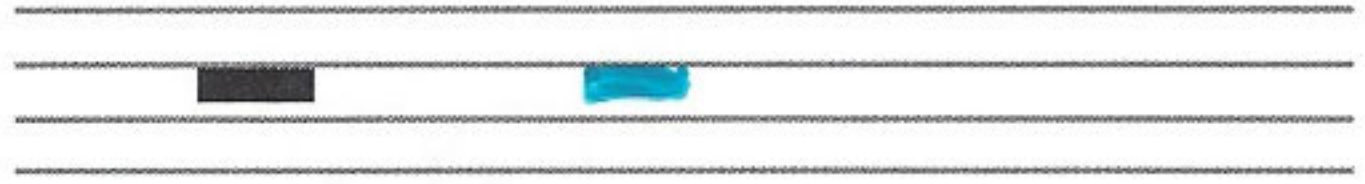
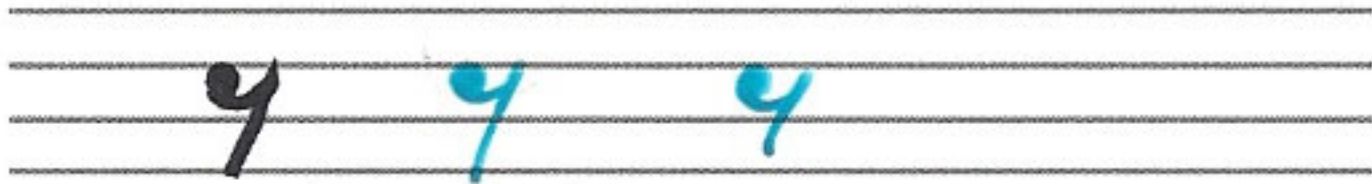


A handwritten musical score on a grand staff (treble and bass clefs) with solfège labels. The notes are blue dots with stems and accidentals. Brackets connect notes across measures.

Measure	Treble Clef Labels	Treble Clef Notes	Bass Clef Labels	Bass Clef Notes
1	fa, fa#	F4, F#4	si, sib	B3, Bb3
2	la, la#	A4, A#4	sol, sol#	G4, G#4
3	do, do#	D5, D#5	ré, réb	E4, Eb4
4	si, sib	B4, Bb4	la, lab	A4, Ab4
5	sol, solb	G4, Gb4	la, la#	A4, A#4





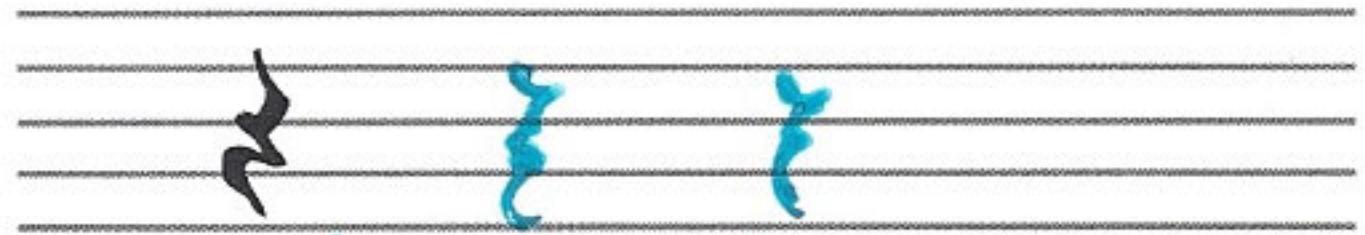
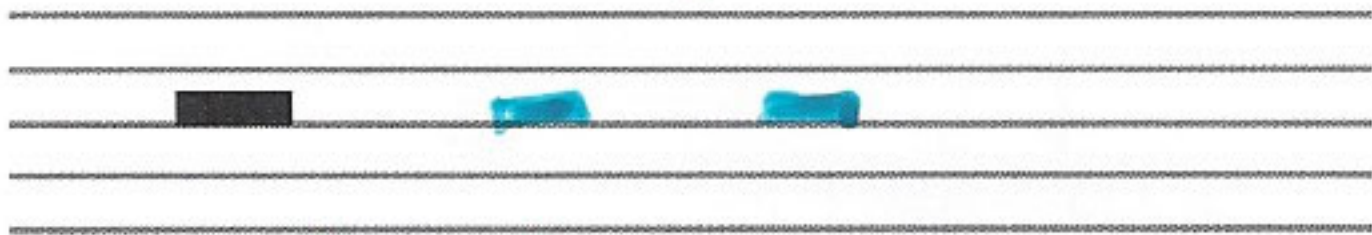
le demi-soupir

la pause



le soupir

le quart de soupir



la demi-pause

le soupir

do# ré#

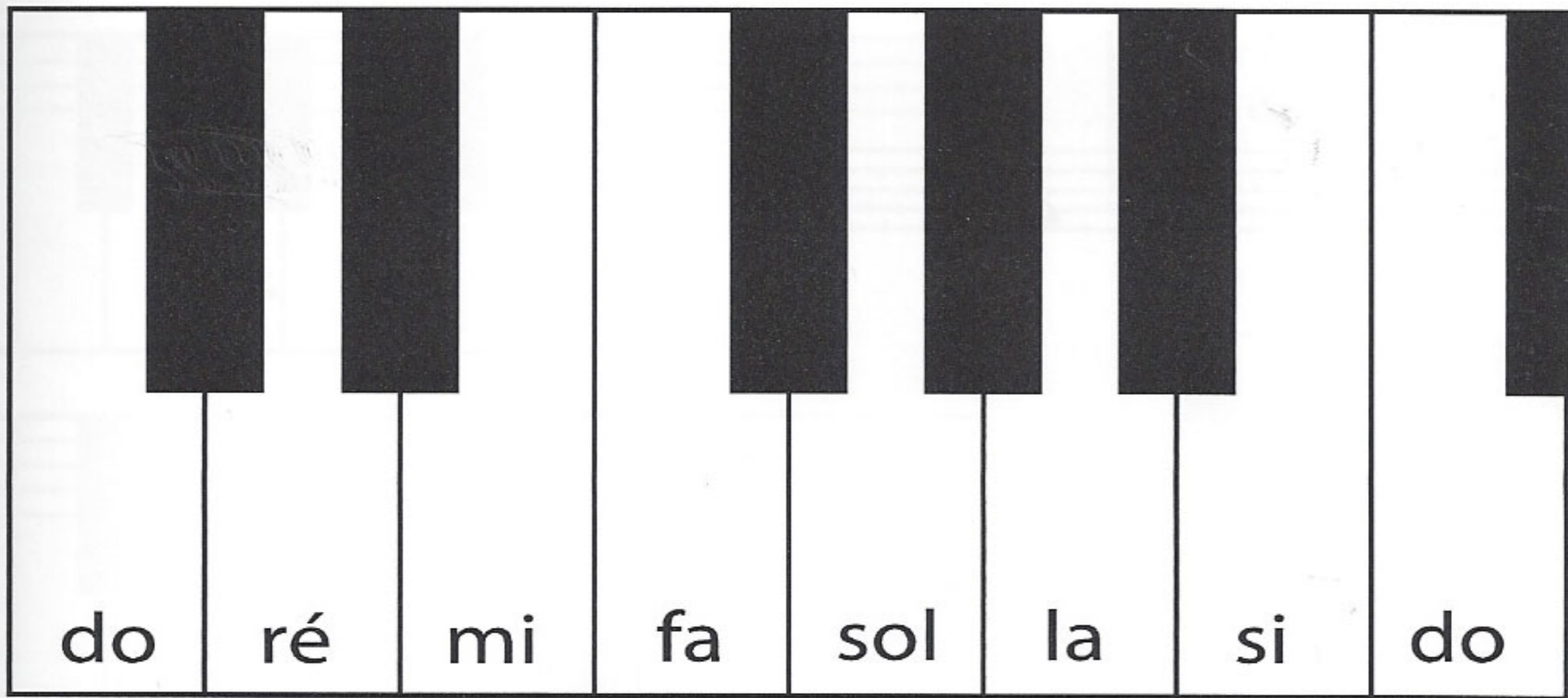
fa# sol# la#

do#

réb mib

solb lab sib

réb



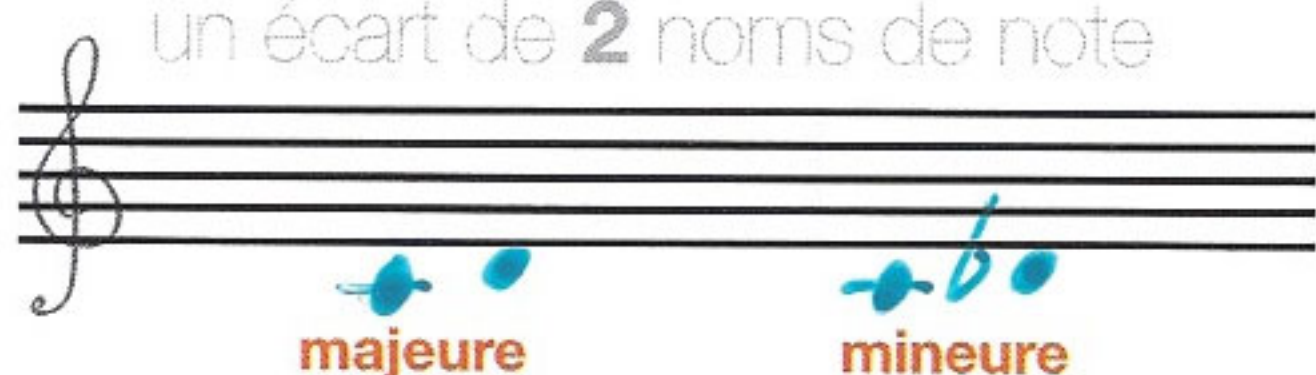
la prime

un «écart» sur la même note



la seconde

un écart de 2 noms de note



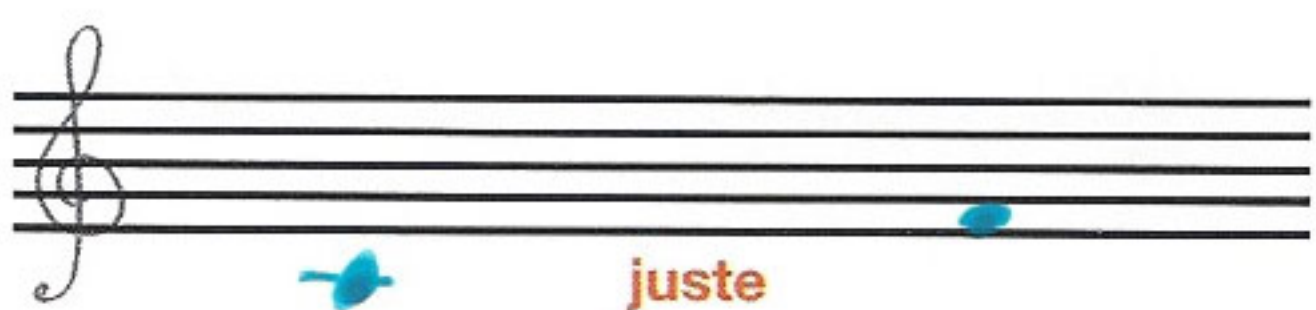
la tierce

un écart de 3 noms de note



la quarte

un écart de 4 noms de note



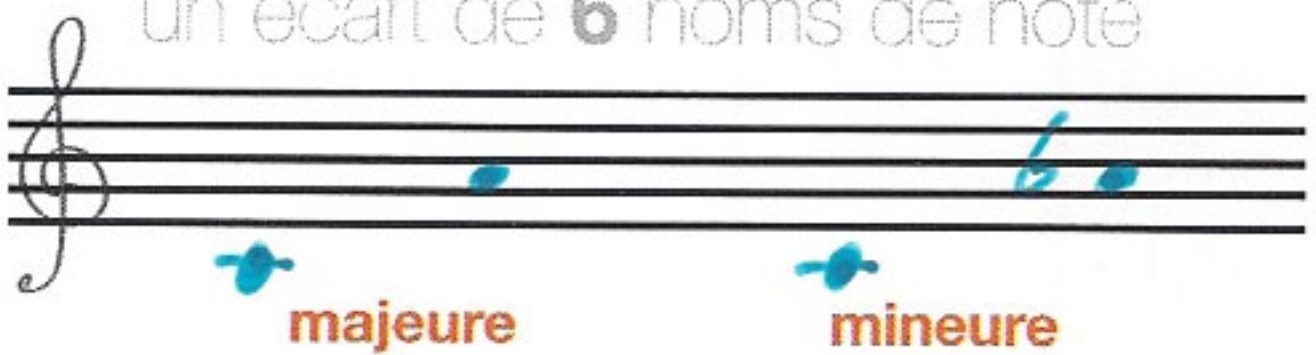
la quinte

un écart de 5 noms de note



la sixte

un écart de 6 noms de note



la septième

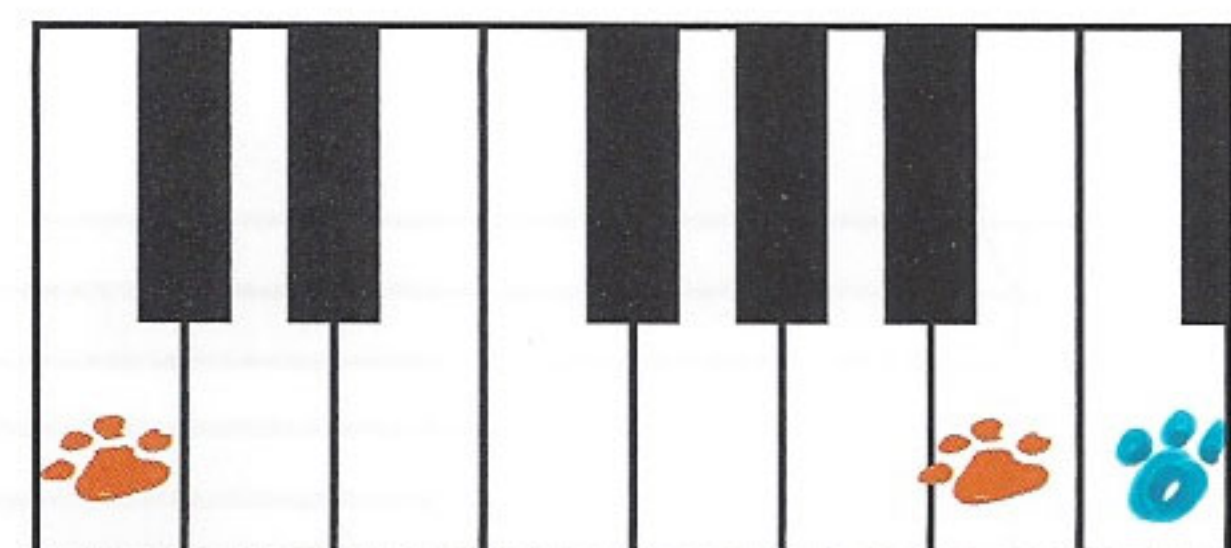
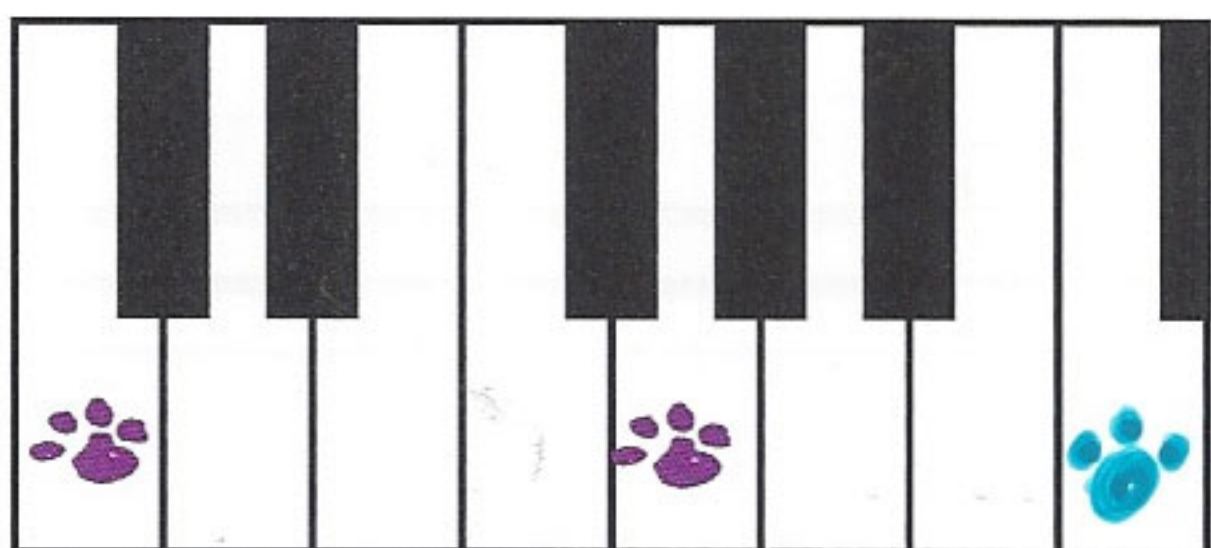
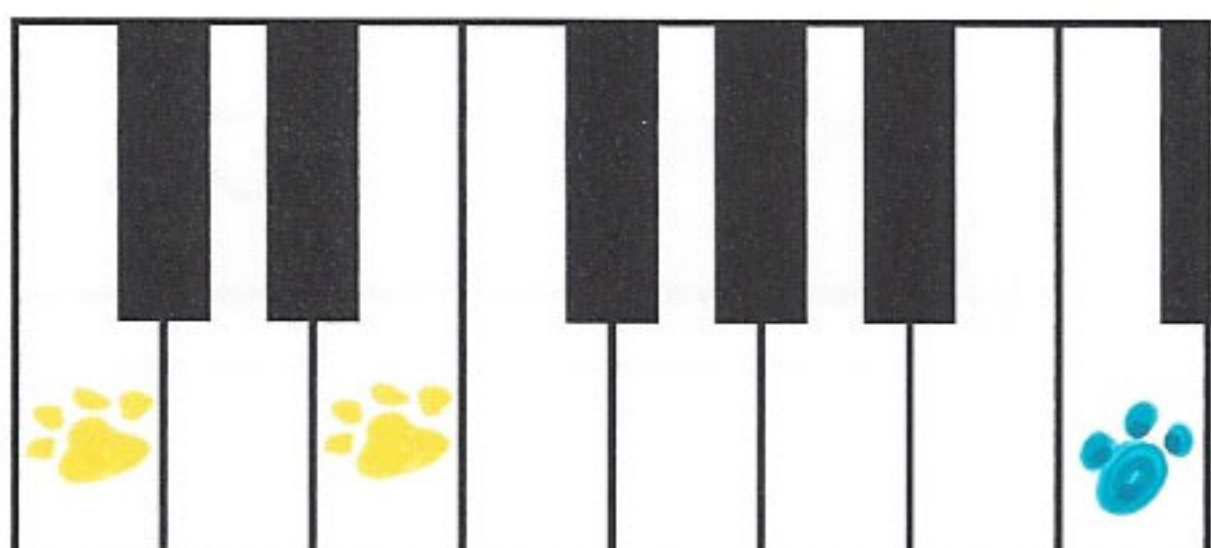
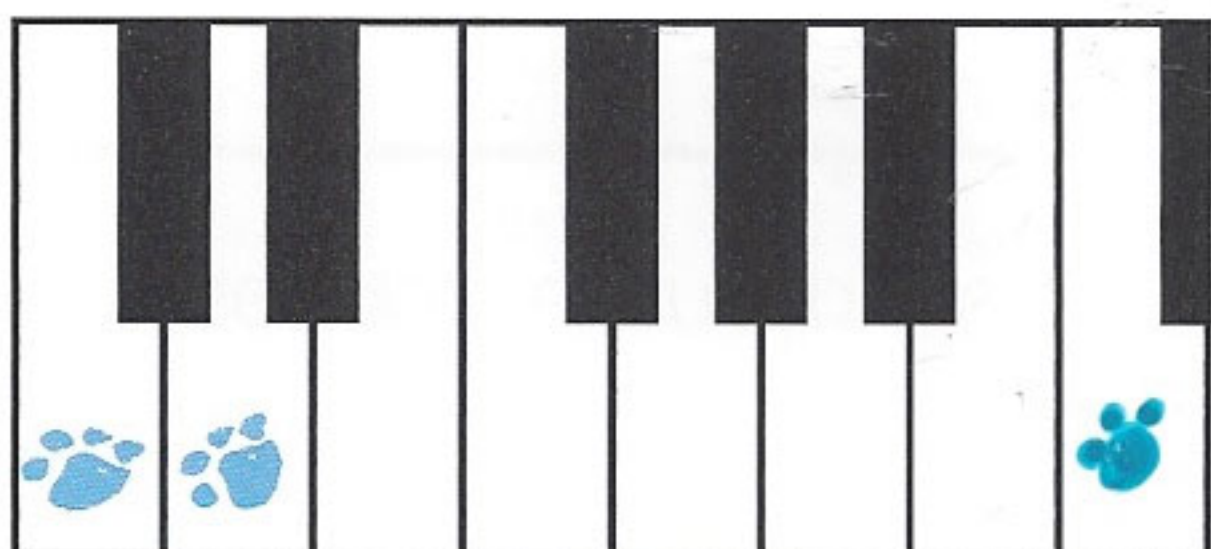
un écart de 7 noms de note



l'octave

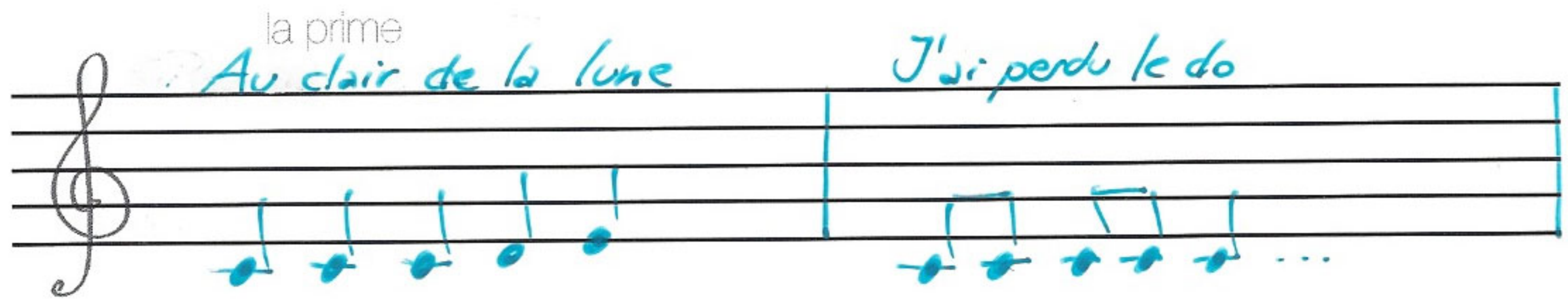
un écart de 8 noms de note





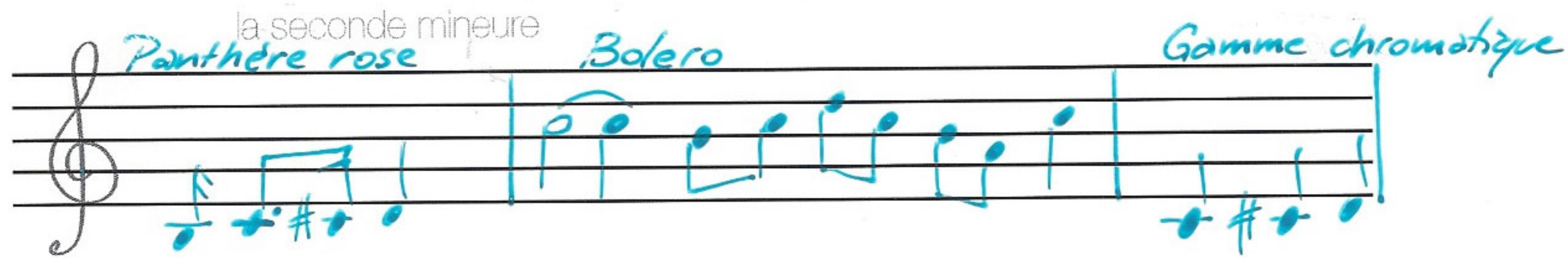
la prime

Au clair de la lune J'ai perdu le do



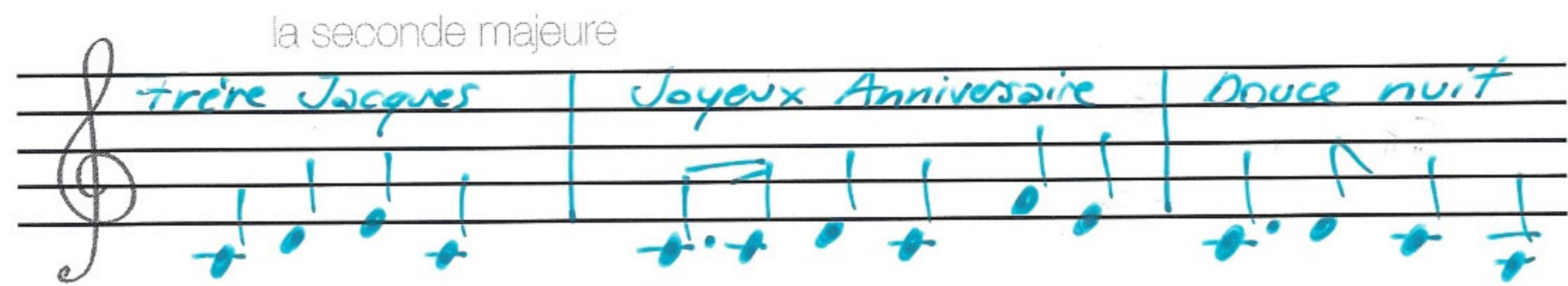
la seconde mineure

Panthère rose Bolero Gamme chromatique




la seconde majeure

Frère Jacques Joyeux Anniversaire Douce nuit



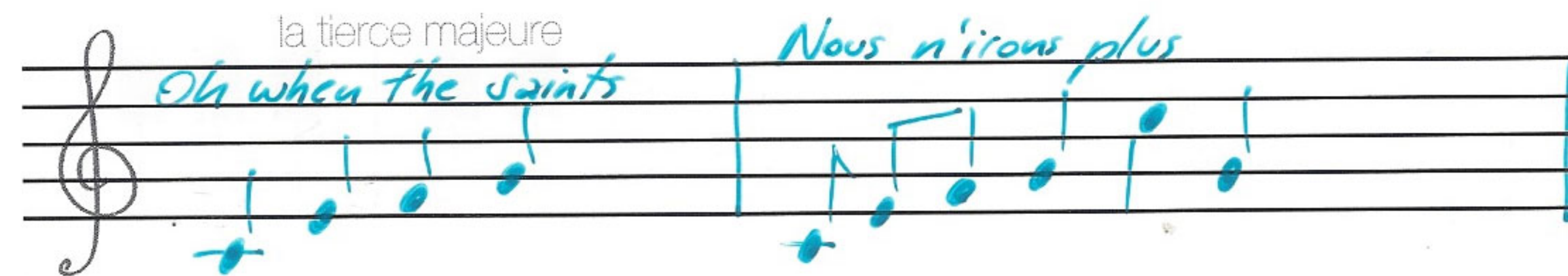
la tierce mineure

minor swing (django reinhardt) Berceuse Brahms



la tierce majeure

Oh when the saints Nous n'irons plus



la quarte

la Marseillaise Mon beau sapin Artésienne (Bizet)



la quinte (Mozart) Starwars (Williams)

Ah vous dirais-je maman

la sixte mineure 1492 (Vangelis)

Black Orfeus

la sixte majeure Il était un petit...

Malbrough s'en va-t-en guerre

la septième mineure An american in Paris (Gershin)

Maman les petits bateaux

la septième majeure I love you (Cole Porter)

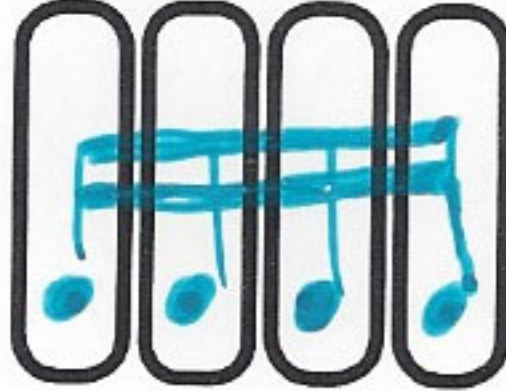
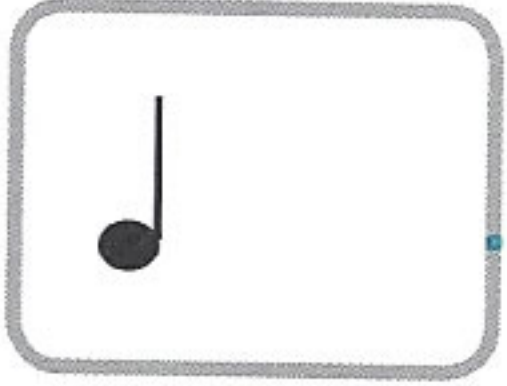
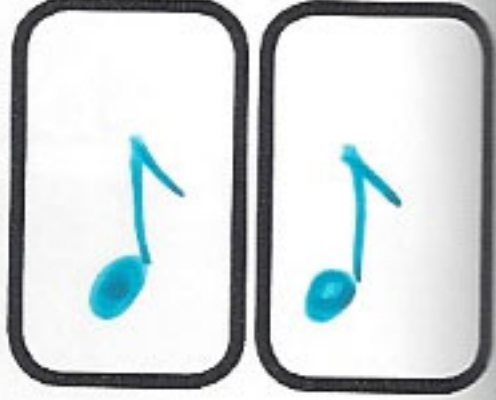
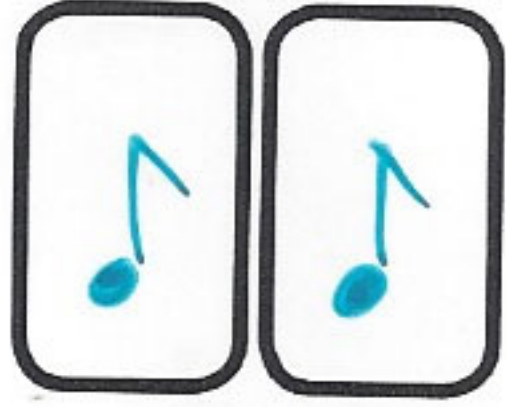
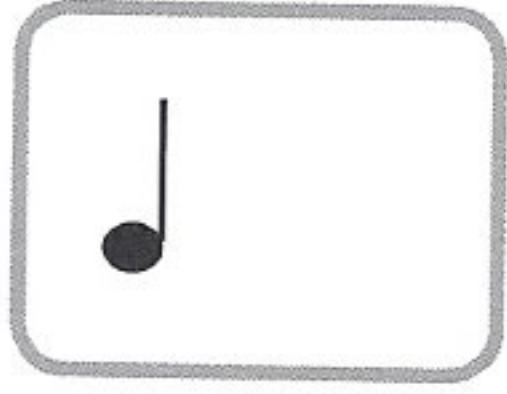
l'octave J'm singing in the rain Blue Bossa

quinte augmentée (ré-la)



sixte diminuée (do-la)





3/4

Handwritten musical notation on a five-line staff. The time signature is 3/4, with the 3 above the line and the 4 below it. The first measure contains three quarter notes (black). The second measure contains a half note (white) and a quarter note (black). The third measure contains four eighth notes (blue). The fourth measure contains a dotted quarter note (white).

1/4

Handwritten musical notation on a five-line staff. The time signature is 1/4, with the 1 above the line and the 4 below it. The first measure contains a whole note (white). The second measure contains a half note (white) and a quarter note (white). The third measure contains a quarter note (blue), an eighth note (blue), and another eighth note (blue). The fourth measure contains a whole note (blue).

4/4

Handwritten musical notation on a five-line staff. The time signature is 4/4, with the 4 above the line and the 4 below it. The first measure contains a quarter note (black). The second measure contains a beamed eighth note (black) and a quarter note (black). The third measure contains a quarter note (black) and a quarter note (black). The fourth measure contains a dotted quarter note (blue), an eighth note (blue), a quarter note (blue), and a quarter note (blue).

2/4

Handwritten musical notation on a five-line staff. The time signature is 2/4, with the 2 above the line and the 4 below it. The first measure contains a half note (white). The second measure contains a half note (white). The third measure contains a quarter note (blue), a quarter note (blue), and a half note (blue). The fourth measure contains a half note (blue), a quarter note (blue), and a quarter note (blue).

2/4

Handwritten musical notation on a five-line staff. The time signature is 2/4, with the 2 above the line and the 4 below it. The first measure contains a quarter note (black). The second measure contains a quarter note (black). The third measure contains a beamed eighth note (blue), a quarter note (blue), a beamed eighth note (blue), and a quarter note (blue). The fourth measure contains a dotted quarter note (blue), an eighth note (blue), and a quarter note (blue).

6
8

3
2

9
8

12
4

3
8

armure

I II III IV V VI VII I

First staff: Treble clef, key signature of two sharps (F# and C#). Chords are marked with blue circles: I (C4, E4, G4), II (D4, F#4, A4), III (E4, G#4, B4), IV (F#4, A4, C5), V (G4, B4, D5), VI (A4, C5, E5), VII (B4, D5, F#5), I (C5).

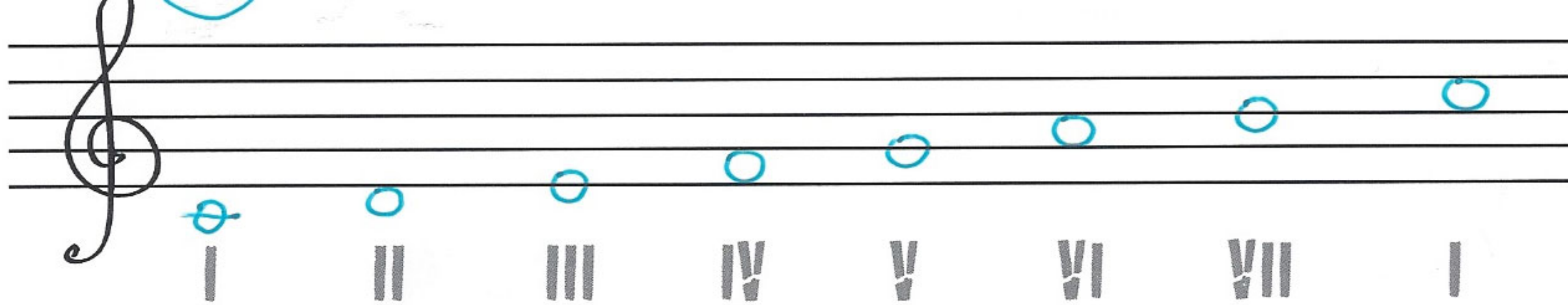
Second staff: Treble clef, key signature of two flats (Bb and Eb). Chords are marked with blue circles: I (C4, Eb4, Gb4), II (D4, F4, Ab4), III (E4, G4, Bb4), IV (F4, Ab4, C5), V (G4, Bb4, D5), VI (A4, C5, Eb5), VII (Bb4, D5, F5), I (C5).

Third staff: Treble clef, key signature of three sharps (F#, C#, G#). Chords are marked with blue circles: I (C4, E4, G#4), II (D4, F#4, A#4), III (E4, G#4, B#4), IV (F#4, A#4, C#5), V (G#4, B#4, D#5), VI (A#4, C#5, E#5), VII (B#4, D#5, F#5), I (C#5).

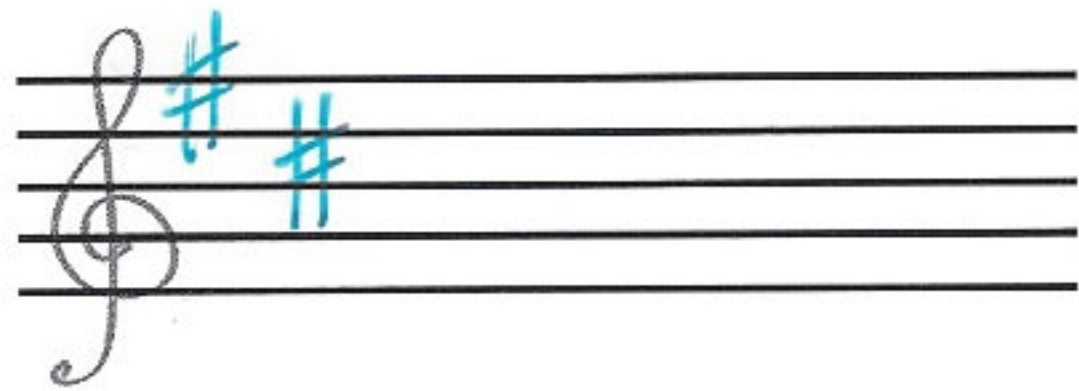
Fourth staff: Treble clef, key signature of one flat (Bb). Chords are marked with blue circles: I (C4, Eb4, G4), II (D4, F4, Ab4), III (E4, G4, Bb4), IV (F4, Ab4, C5), V (G4, Bb4, D5), VI (A4, C5, Eb5), VII (Bb4, D5, F5), I (C5).

Fifth staff: Treble clef, key signature of three flats (Bbb, Ebb, Abb). Chords are marked with blue circles: I (C4, Ebb4, Gbb4), II (D4, Fbb4, Abb4), III (E4, Gbb4, Bbb4), IV (Fbb4, Abb4, C#5), V (Gbb4, Bbb4, D#5), VI (Abb4, C#5, E#5), VII (Bbb4, D#5, F#5), I (C#5).

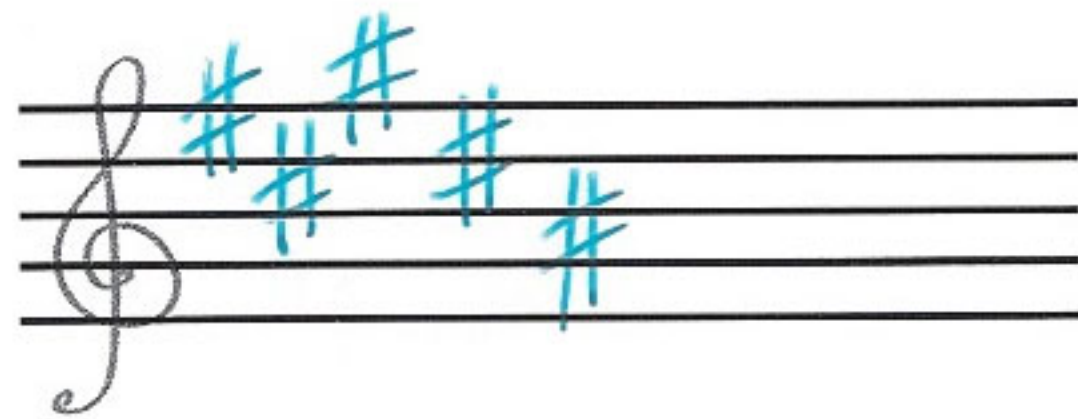
Sixth staff: Treble clef, key signature of one flat (Bb). Chords are marked with blue circles: I (C4, Eb4, G4), II (D4, F4, Ab4), III (E4, G4, Bb4), IV (F4, Ab4, C5), V (G4, Bb4, D5), VI (A4, C5, Eb5), VII (Bb4, D5, F5), I (C5).



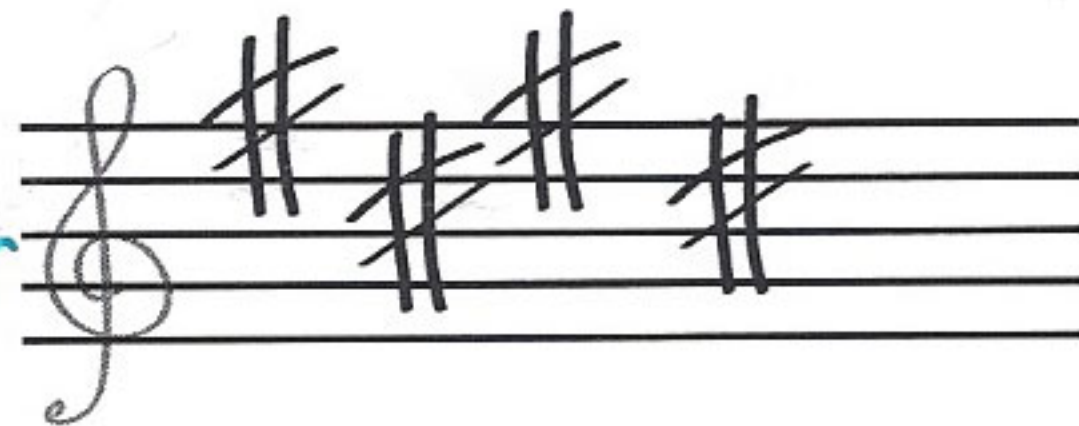
Ré Majeur



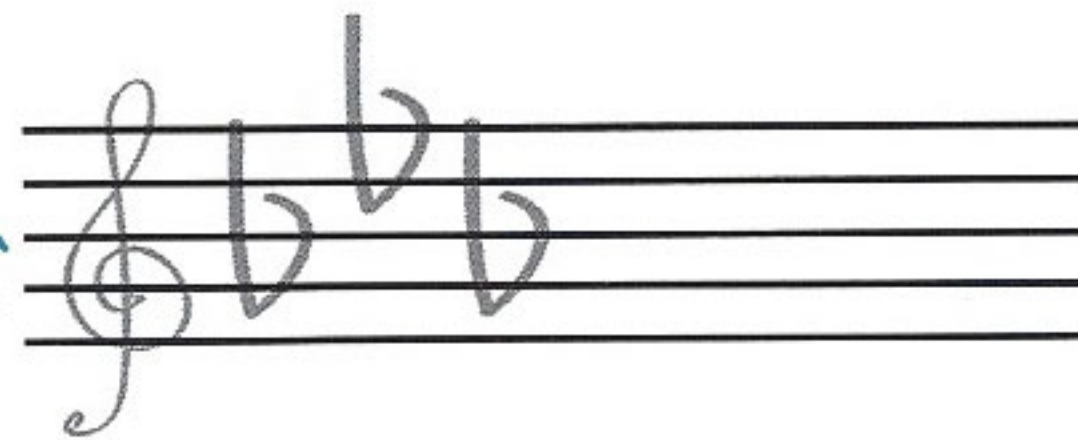
Si Majeur



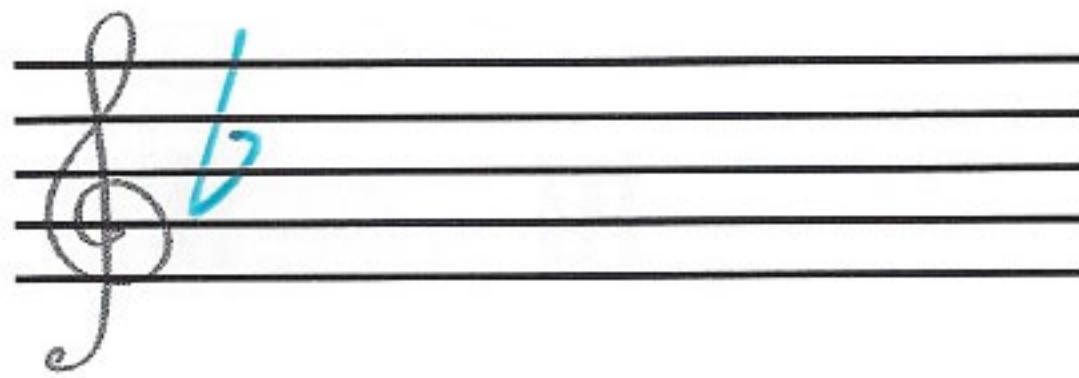
Mi Majeur



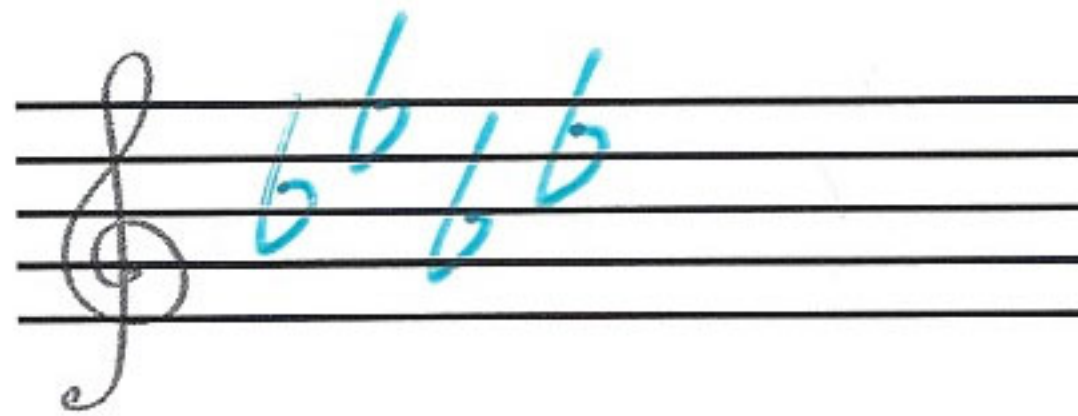
MiB Majeur



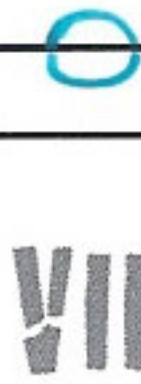
Fa Majeur



Lab Majeur

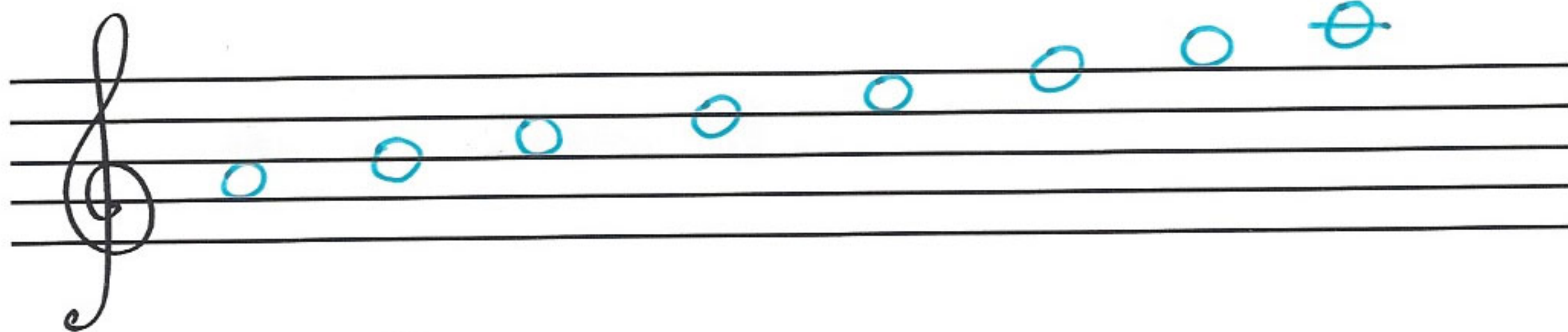


la mineur



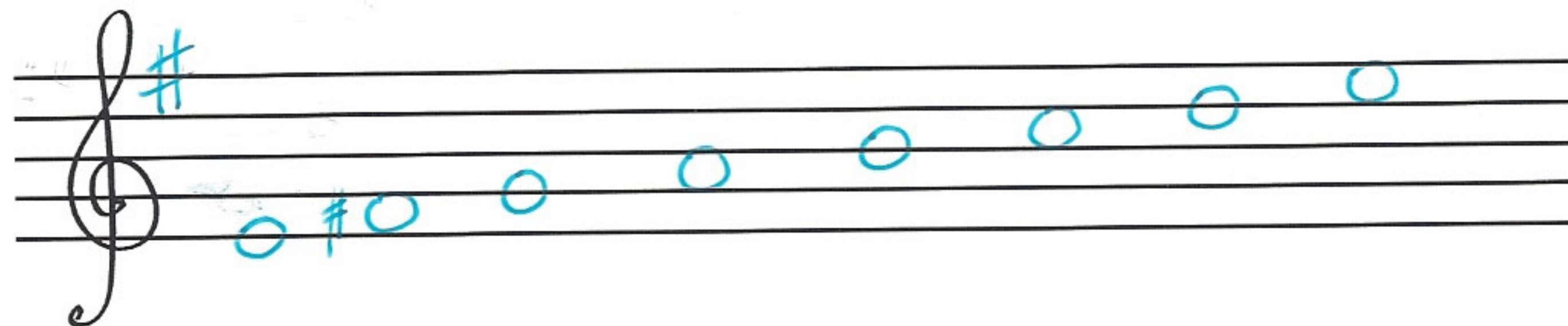
DO MAJEUR

la mineur



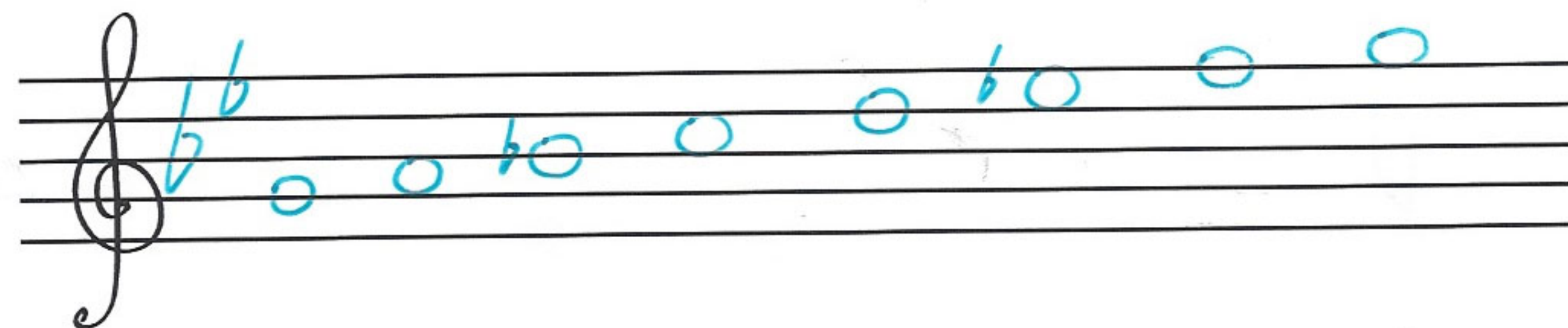
SOL MAJ.

mi mineur



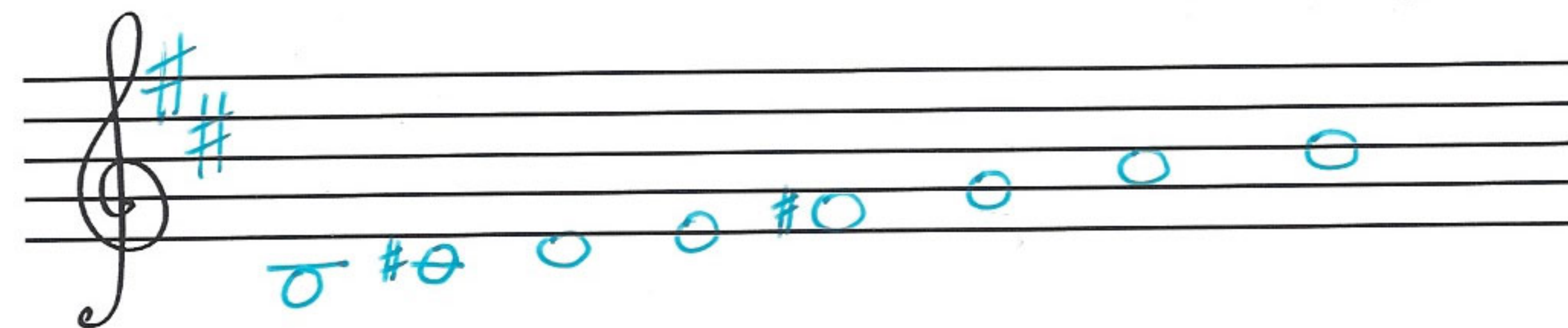
SIB MAJEUR

sol mineur



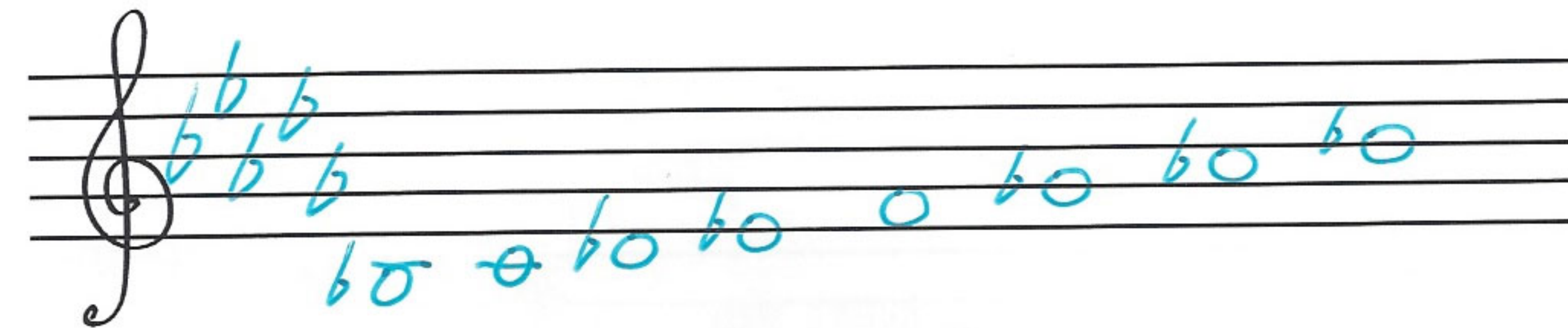
RE MAJ.

si mineur



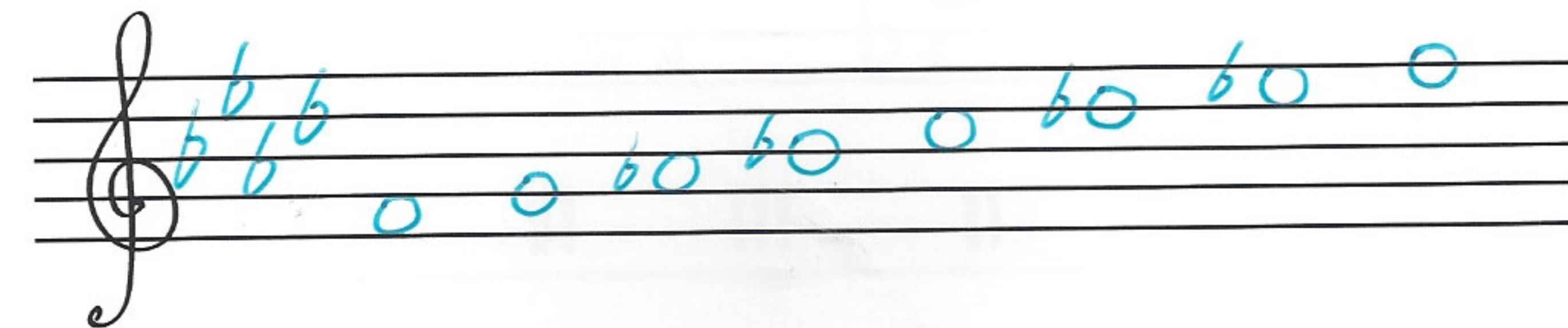
REb MAJEUR

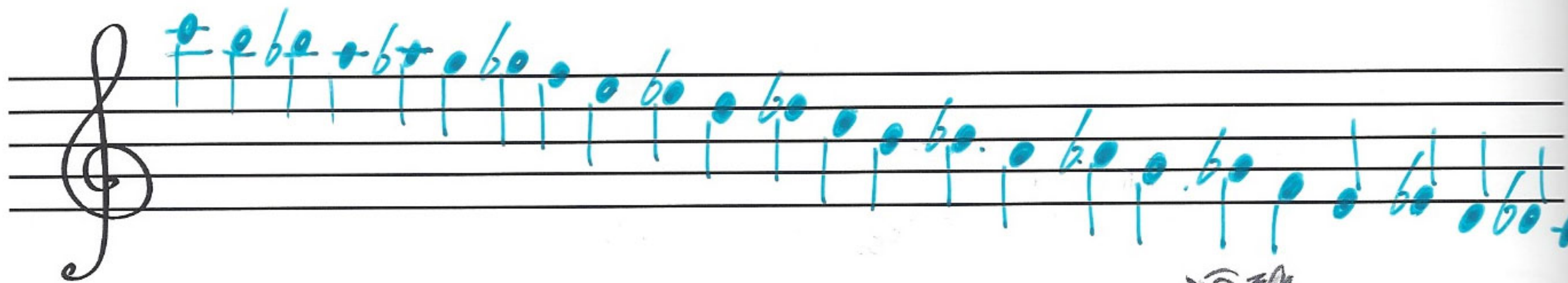
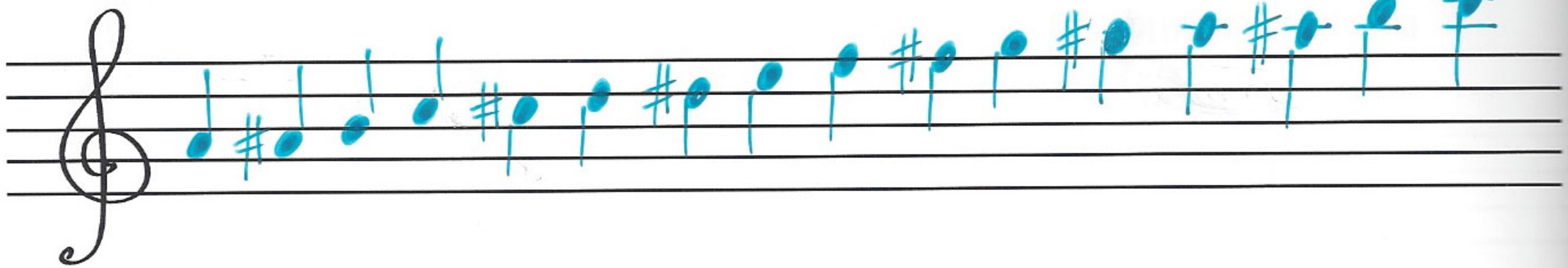
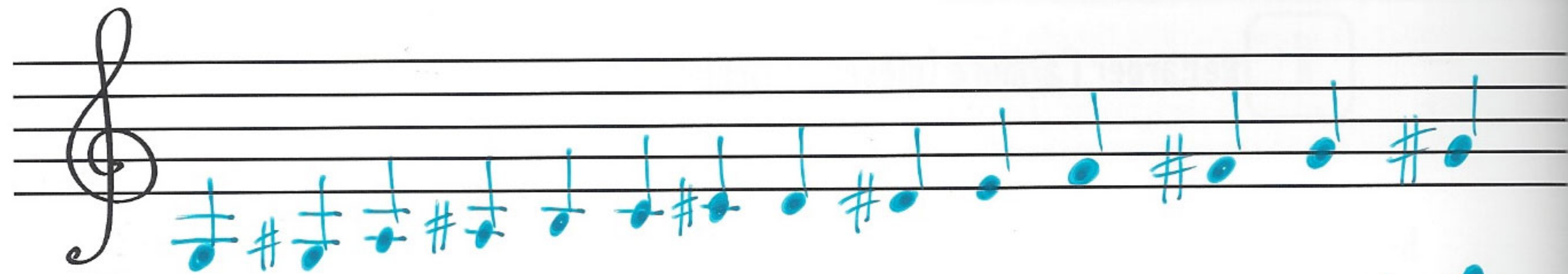
sib mineur



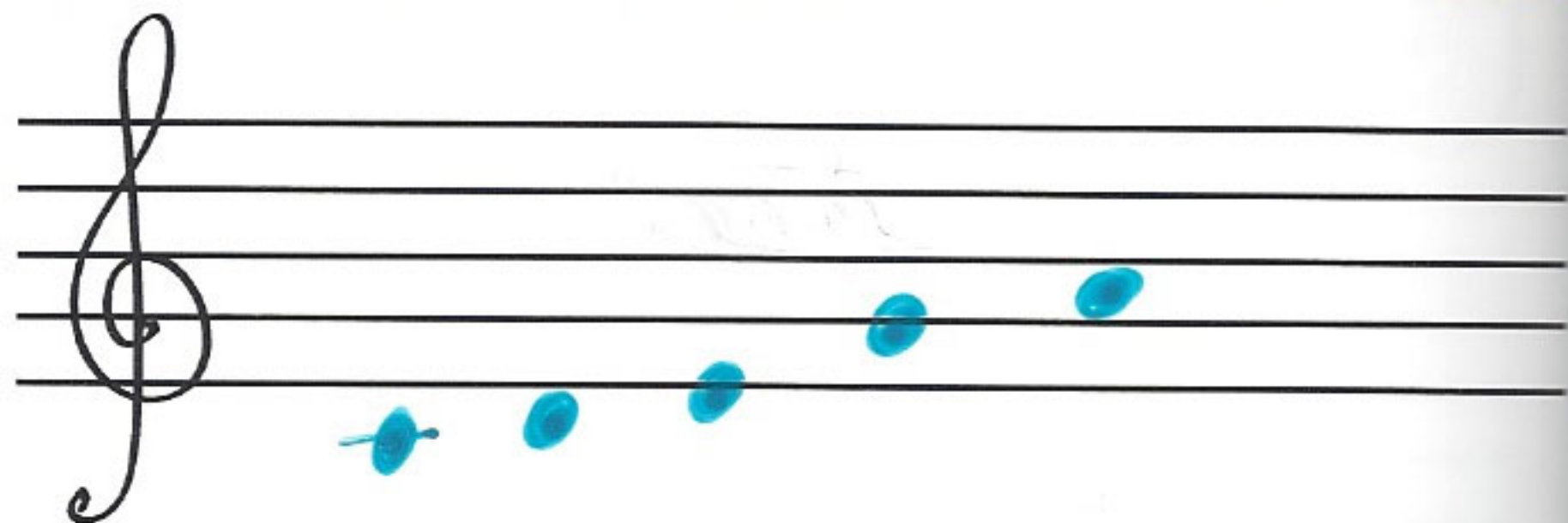
LAB MAJ.

fa mineur









La gamme pentatonique mineure comprend les intervalles suivants :
tonique - tierce mineure - quarte - quinte - septième mineure.

Par exemple, la gamme de LA pentatonique mineure comprend les notes la, do, ré, mi, sol.

Elle est fréquemment employée dans la plupart des musiques et se retrouve dans le rock et le blues.
On trouve la formulation « pentatonique majeure » ou « pentatonique mineure ».

Exercice:



Ci-dessus, inscris la gamme de
LA pentatonique mineure.

correctif: voir page 54



A écouter **Ma mère l'Oye** **M. Ravel**

La troisième pièce pour piano:
«Laideronnette, impératrice des
pagodes» utilise une gamme
pentatonique, uniquement les
touches noires du piano. Cela
donne une touche asiatique!

A toi d'essayer

Exercice:



Inscris les deux gammes octatoniques dans les portées ci-dessous.
Commence par la note DO.

correctif: voir page 54



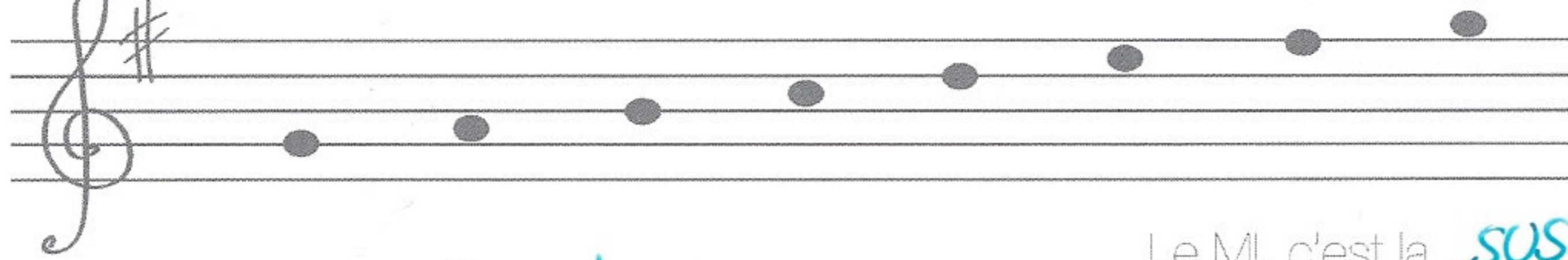
octaquoi?

Handwritten musical notation for an octatonic scale in treble clef. The notes are D4, E4, F#4, G4, A4, B4, C5, D5. Fingerings are indicated by numbers 1 and 1/2 above the notes.

Handwritten musical notation for an octatonic scale in treble clef. The notes are D4, E4, F4, G4, A4, B4, C5, D5. Fingerings are indicated by numbers 1 and 1/2 above the notes.



tonique!
pff..



Gamme de **SOL** majeur.

Le LA, c'est la **sus-tonique**

Le DO, c'est la **sous-dominante**

Le SOL, c'est la **tonique**

Le MI, c'est la **sus-dominante**

Le SI, c'est la **médiate**

Le RE, c'est la **dominante**

Le FA, c'est la **sensible**